

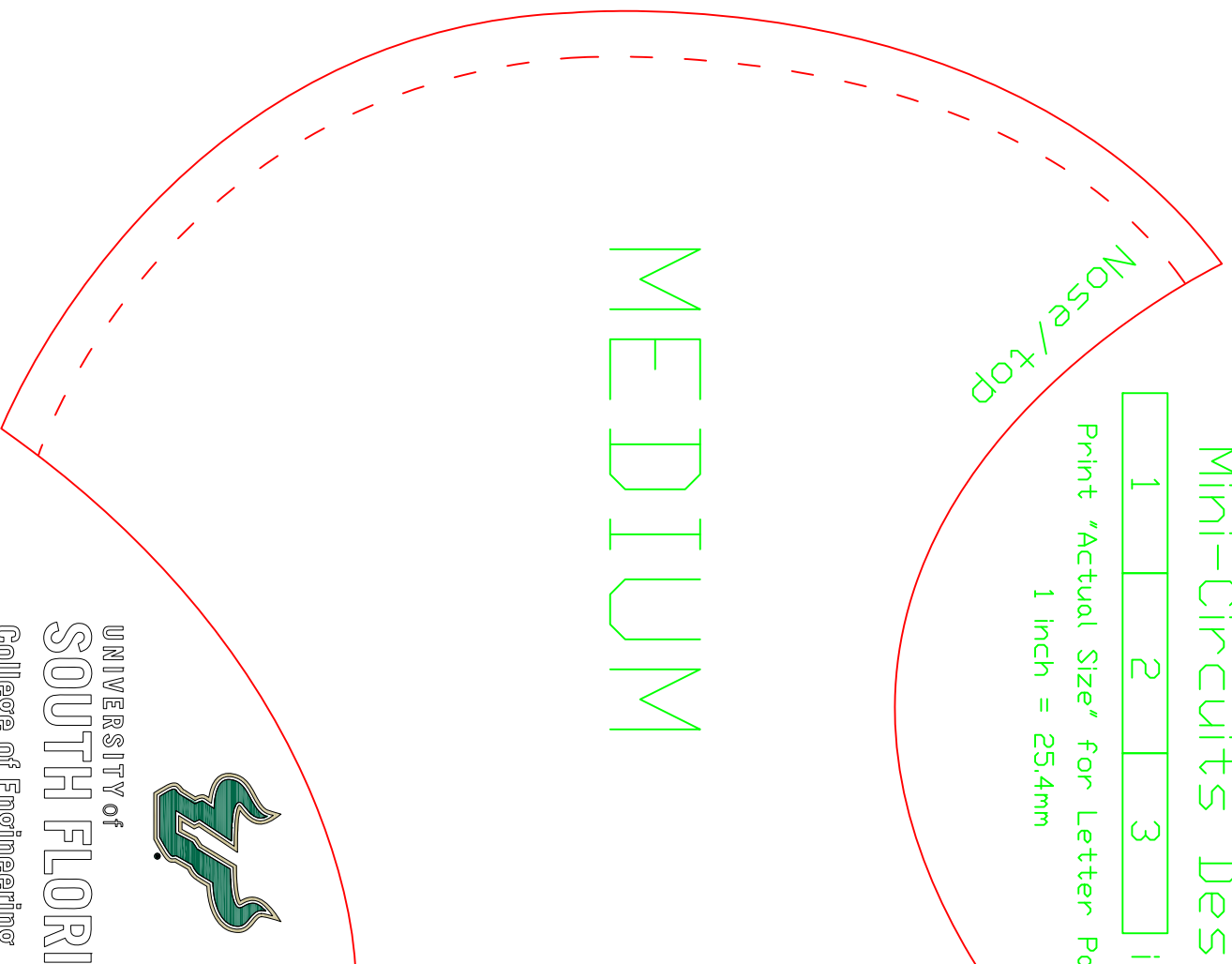
University of South Florida

Mini-Circuits Design for X Laboratory

1 2 3 inches (ensure scale is correct)

Print "Actual Size" for Letter Pages

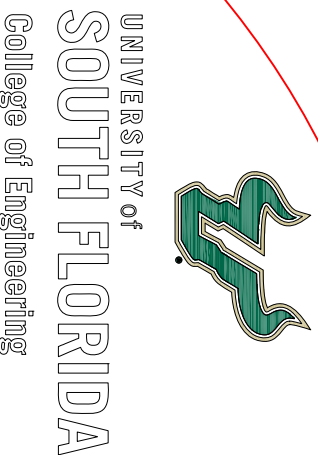
1 inch = 25.4mm



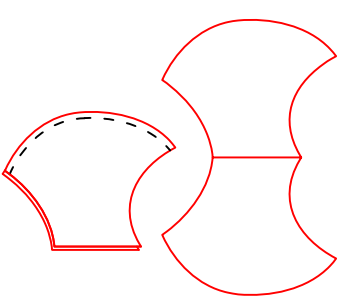
Nose/top

MEDIUM

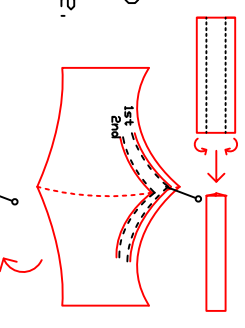
Align fabric thread to here



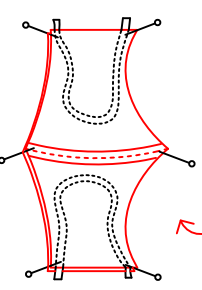
1. Cut the pattern out mirror as shown, 1 set cotton (outer), 1 set flannel or soft material.
2. Match and Stitch the cotton set along the arc 1/4 inch in, patterns inside. Repeat for Flannel.



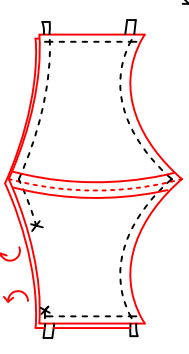
3. Form and pin the 1 inch bias tape 1/4 inch from edge of flannel nap side (opposite of seam). Stitch 1/8 inch from edge.



4. Pin with 8 inches of elastic inside of sandwich with seams out, elastic extended 1/4 inch.



5. Stitch almost the whole way around leaving ~2 inches open. Turn inside out and pull all elastic and edges smooth and tight.



6. Fold in open unstitched section and Top Stitch 1/8 inch in from edge on cotton side.

